



# State of the Court

## February 2018

**Our mission is to serve the public by providing a fair and impartial forum that ensures equal access to justice in accordance with the rule of law, protects rights and liberties of all persons, and resolves cases in a timely and efficient manner.**



2018 State of the Court

# District Geography and Demographics

# District of Colorado

- Coterminous with state boundaries
- 8<sup>th</sup> largest state by area
- **Population:** 5,607,154 (2017 est.)
- Other than Alaska, Colorado is the federal judicial district with the largest geographic area and one primary courthouse (Denver)
  - 7 District Judgeships
  - 7 Full-time Magistrate Judgeships
  - 2 Part-time Magistrate Judgeships
- **Durango** – courthouse, part-time Magistrate Judge, bi-monthly term of court,
- **Grand Junction** – courthouse, part-time Magistrate Judge, bi-monthly term of court
- **Colorado Springs** – rented space full-time Magistrate Judge



# Travel Distances Within Colorado

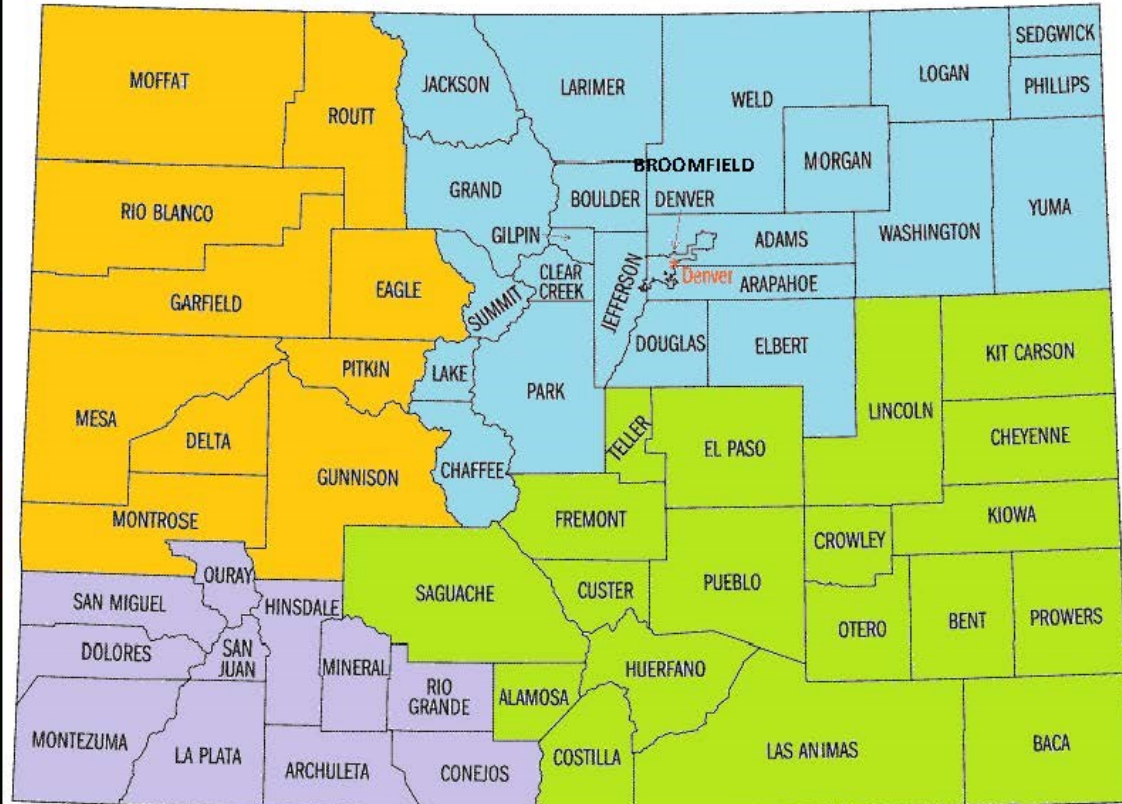
- Denver to Durango = 340 miles  
= *Washington D.C. to Hartford, CT*
- Denver to Grand Junction = 240 miles  
= *Washington D.C. to New York City*
- Some jurors drive 400 miles to Denver  
= *Washington D.C. to Buffalo, NY*



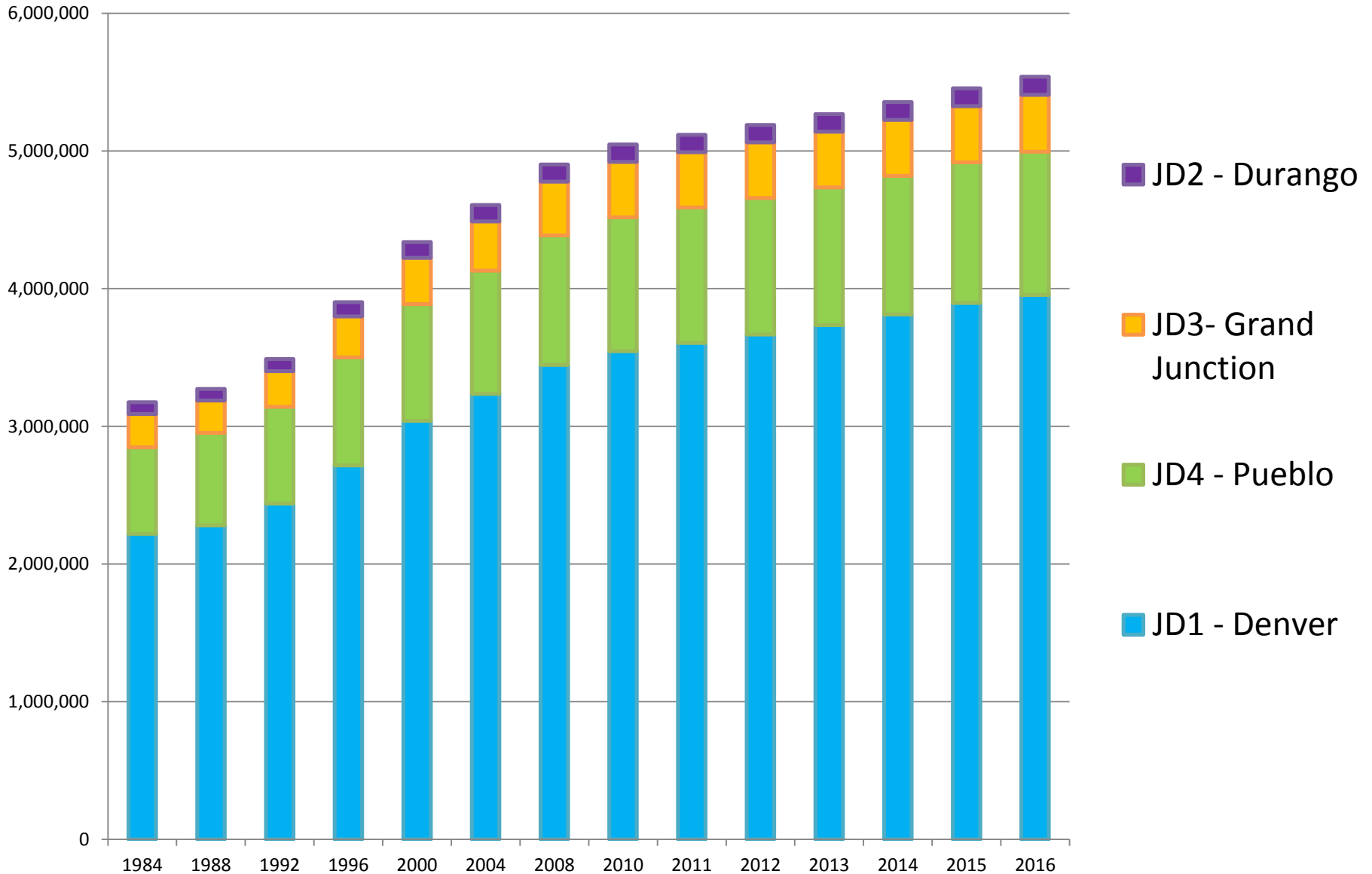
# Jury Divisions

Effective July 1, 2017

| District of Colorado Jury Divisions |            |
|-------------------------------------|------------|
| <b>Division 1</b>                   |            |
| Adams                               | Jefferson  |
| Arapahoe                            | Lake       |
| Boulder                             | Larimer    |
| Broomfield                          | Logan      |
| Chaffee                             | Morgan     |
| Clear Creek                         | Park       |
| Denver                              | Phillips   |
| Douglas                             | Sedgwick   |
| Elbert                              | Summit     |
| Gilpin                              | Washington |
| Grand                               | Weld       |
| Jackson                             | Yuma       |
| <b>Division 2</b>                   |            |
| Archuleta                           | Montezuma  |
| Conejos                             | Ouray      |
| Dolores                             | Rio Grande |
| Hinsdale                            | San Juan   |
| La Plata                            | San Miguel |
| Mineral                             |            |
| <b>Division 3</b>                   |            |
| Delta                               | Moffat     |
| Eagle                               | Montrose   |
| Garfield                            | Pitkin     |
| Gunnison                            | Rio Blanco |
| Mesa                                | Routt      |
| <b>Division 4</b>                   |            |
| Alamosa                             | Kiowa      |
| Baca                                | Kit Carson |
| Bent                                | Las Animas |
| Cheyenne                            | Lincoln    |
| Costilla                            | Otero      |
| Crowley                             | Prowers    |
| Custer                              | Pueblo     |
| El Paso                             | Saguache   |
| Fremont                             | Teller     |
| Huerfano                            |            |



# Population by Jury Division, 1984–2016



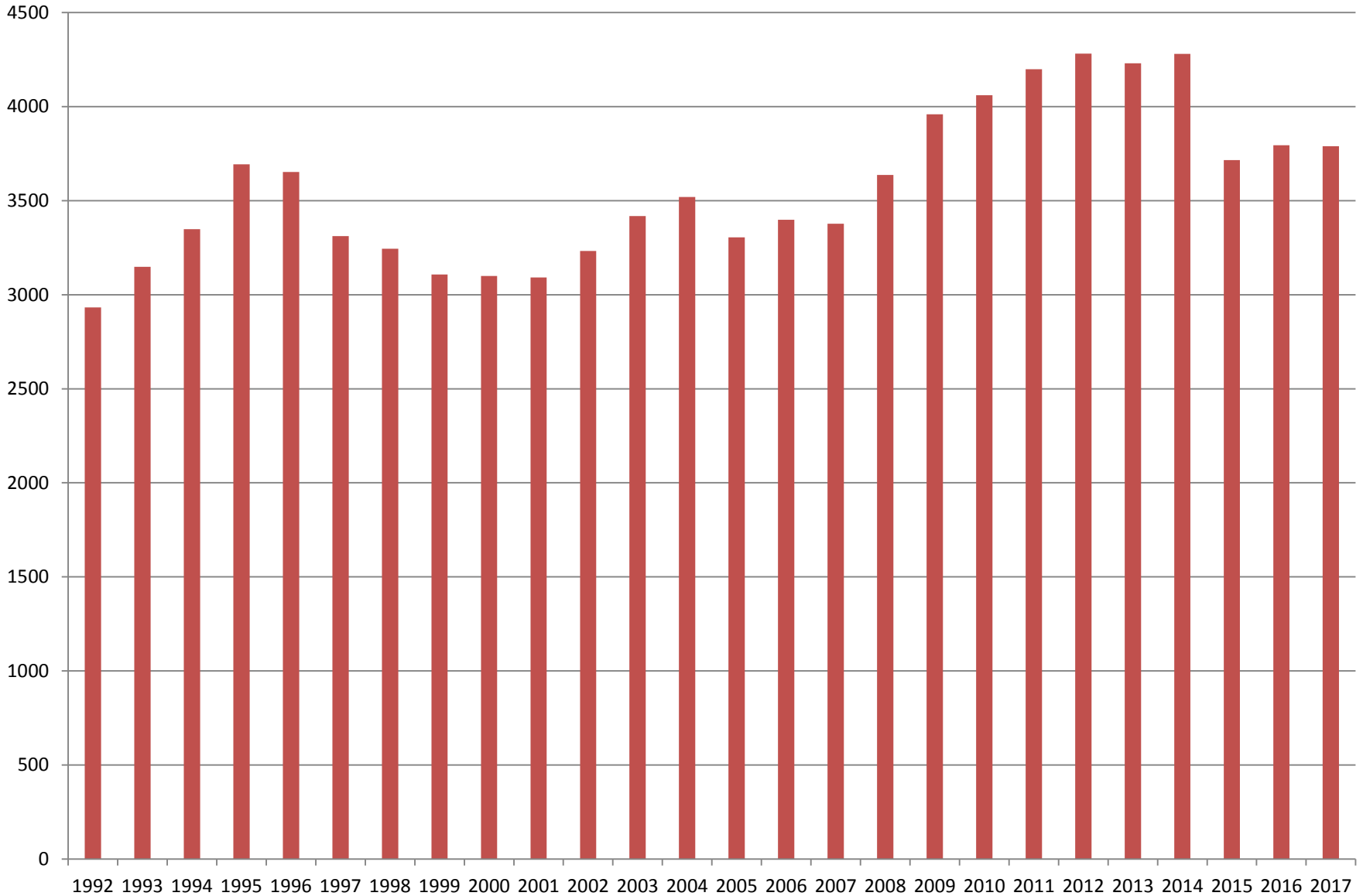


2018 State of the Court

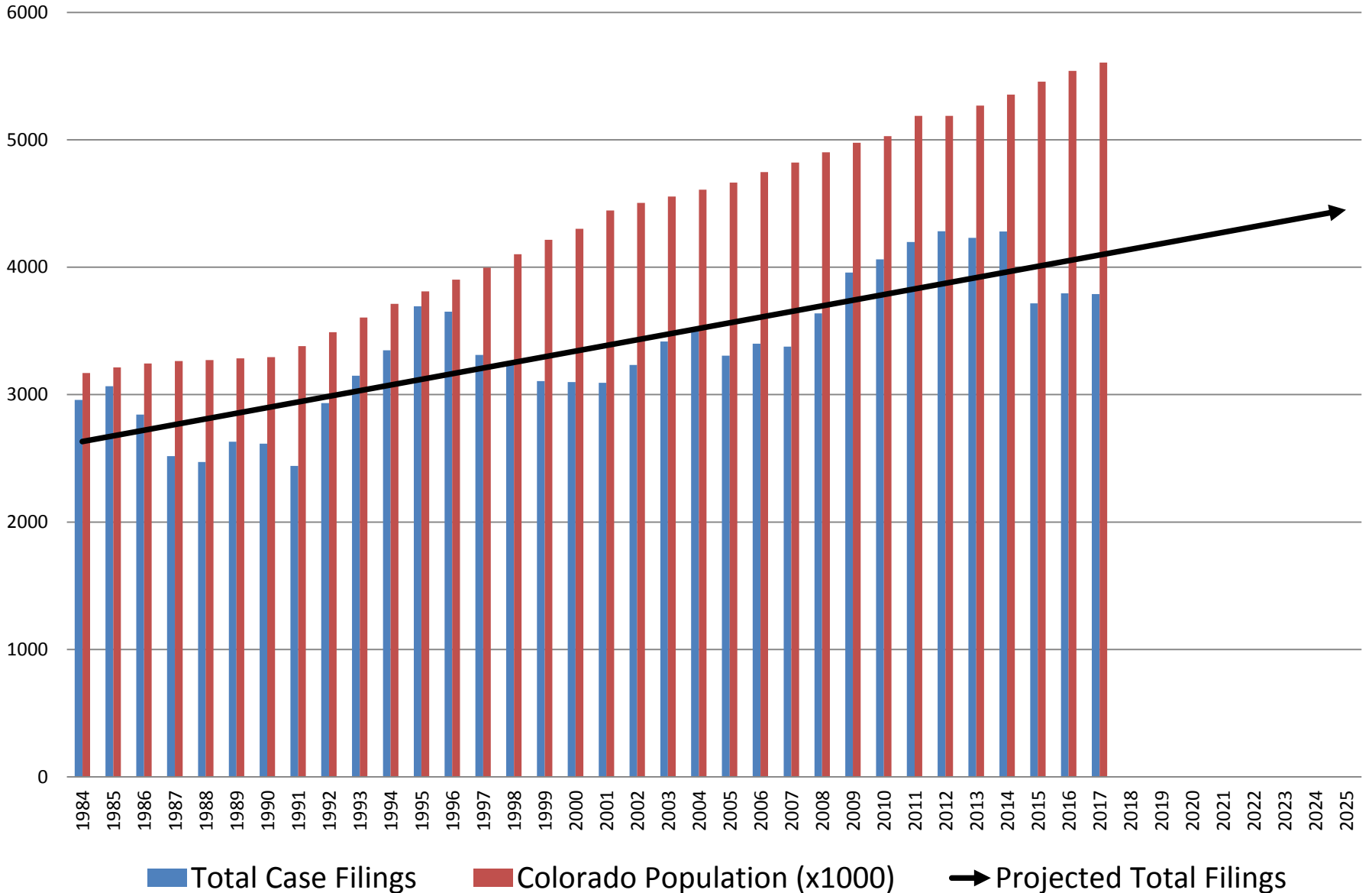
# Current Caseload



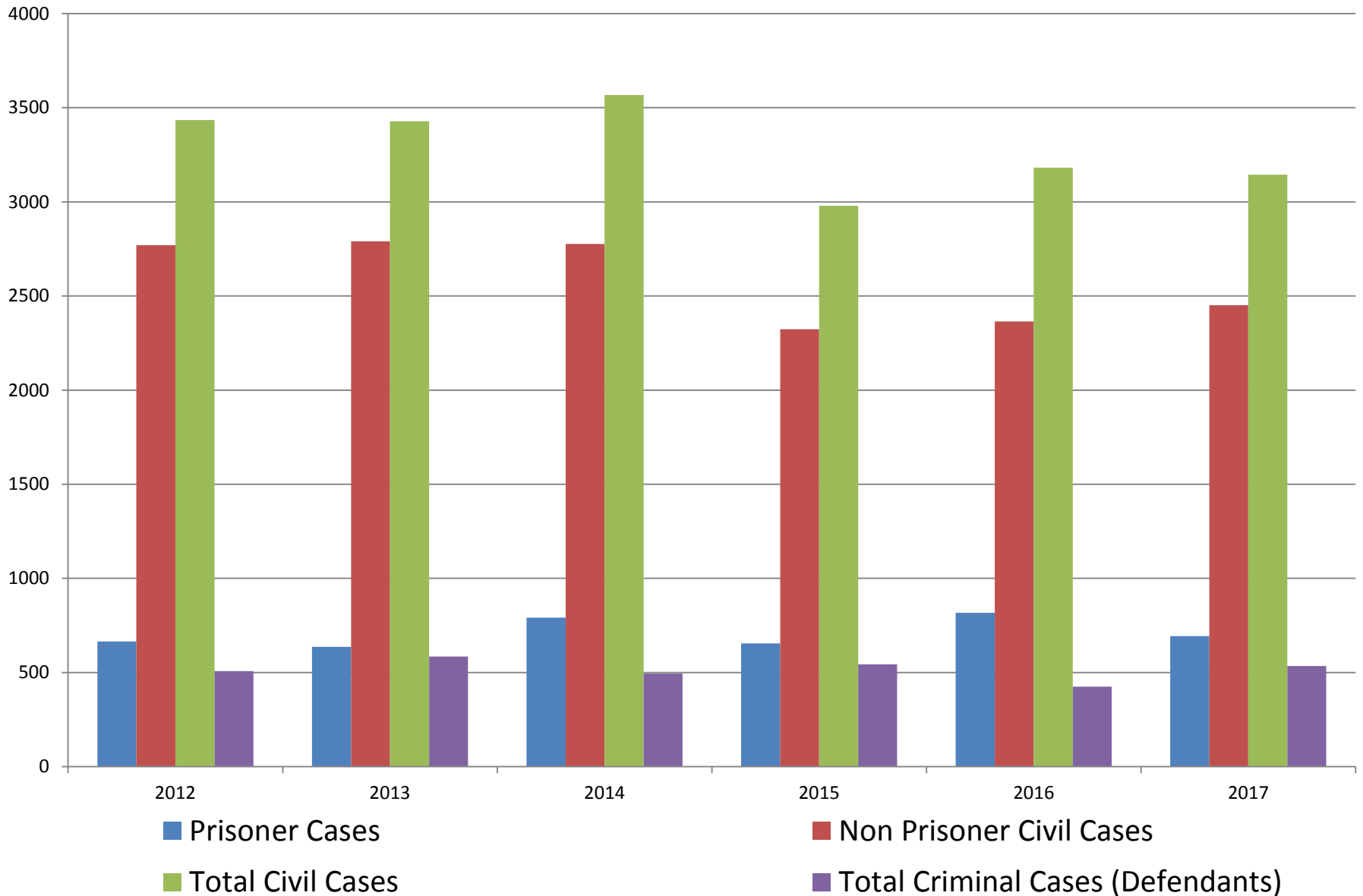
# Total Filings, 1992–2017



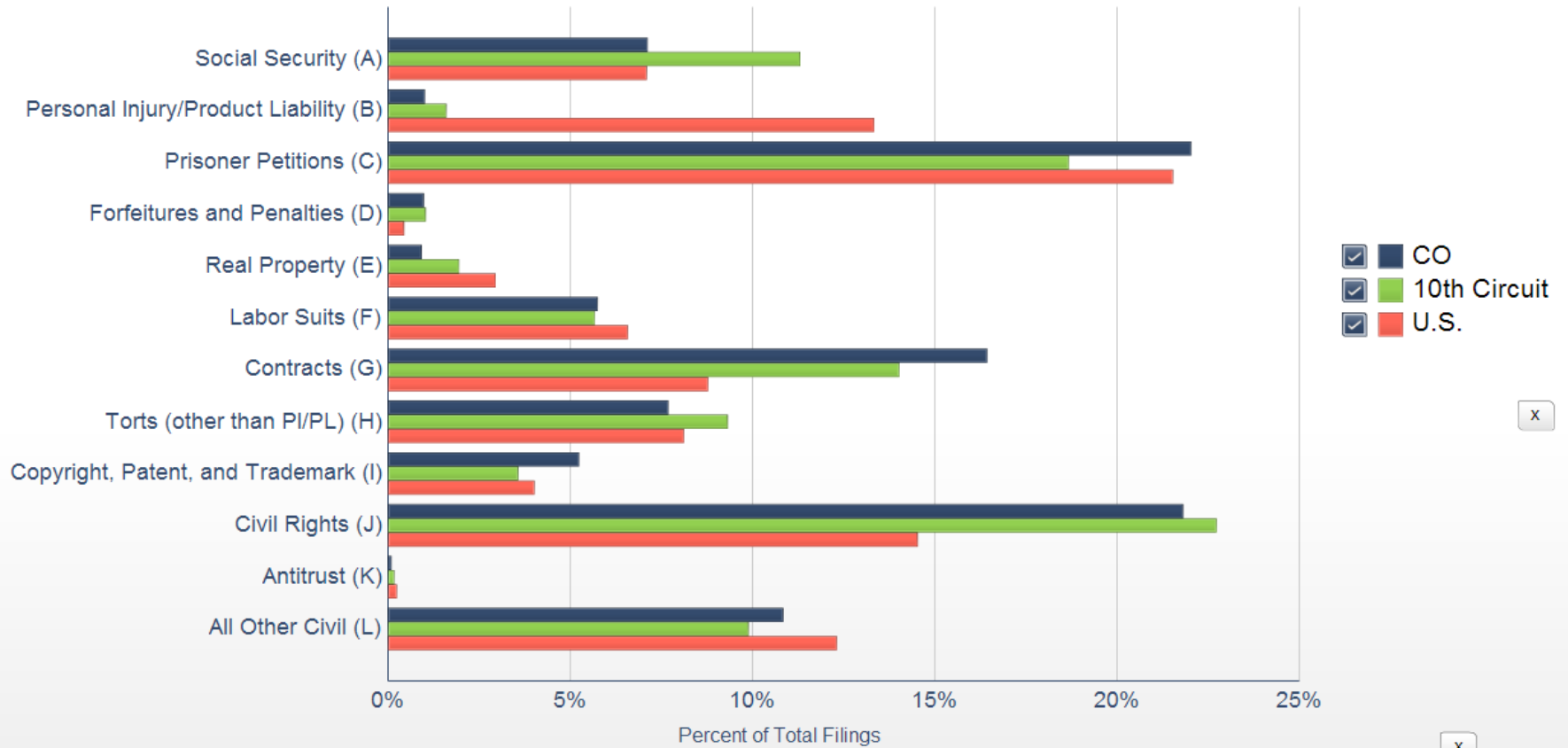
# Population v. Total Filings, 1984–2025



# Civil v. Criminal Cases, 2012–2017

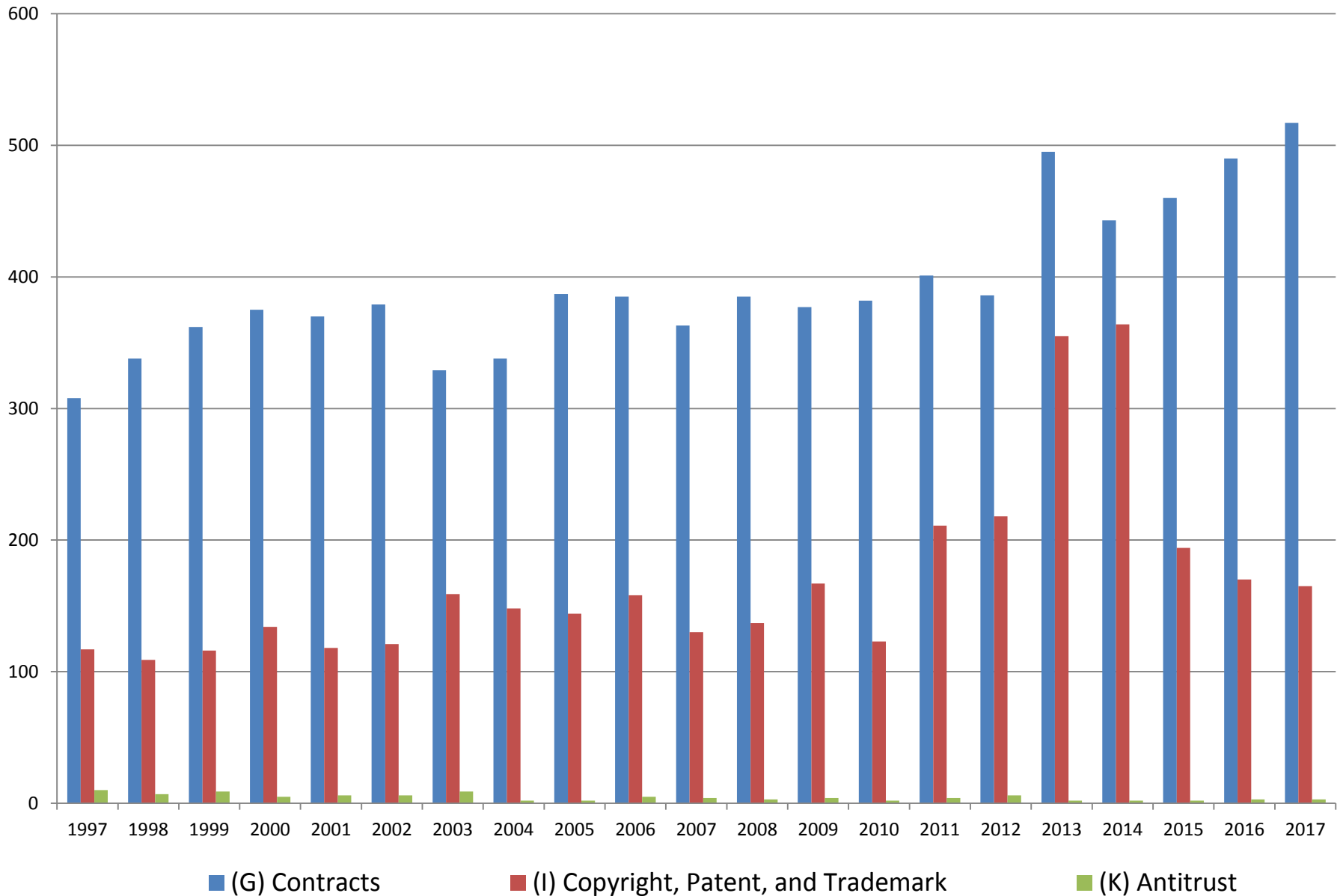


# Civil Case Snapshot, September 2017

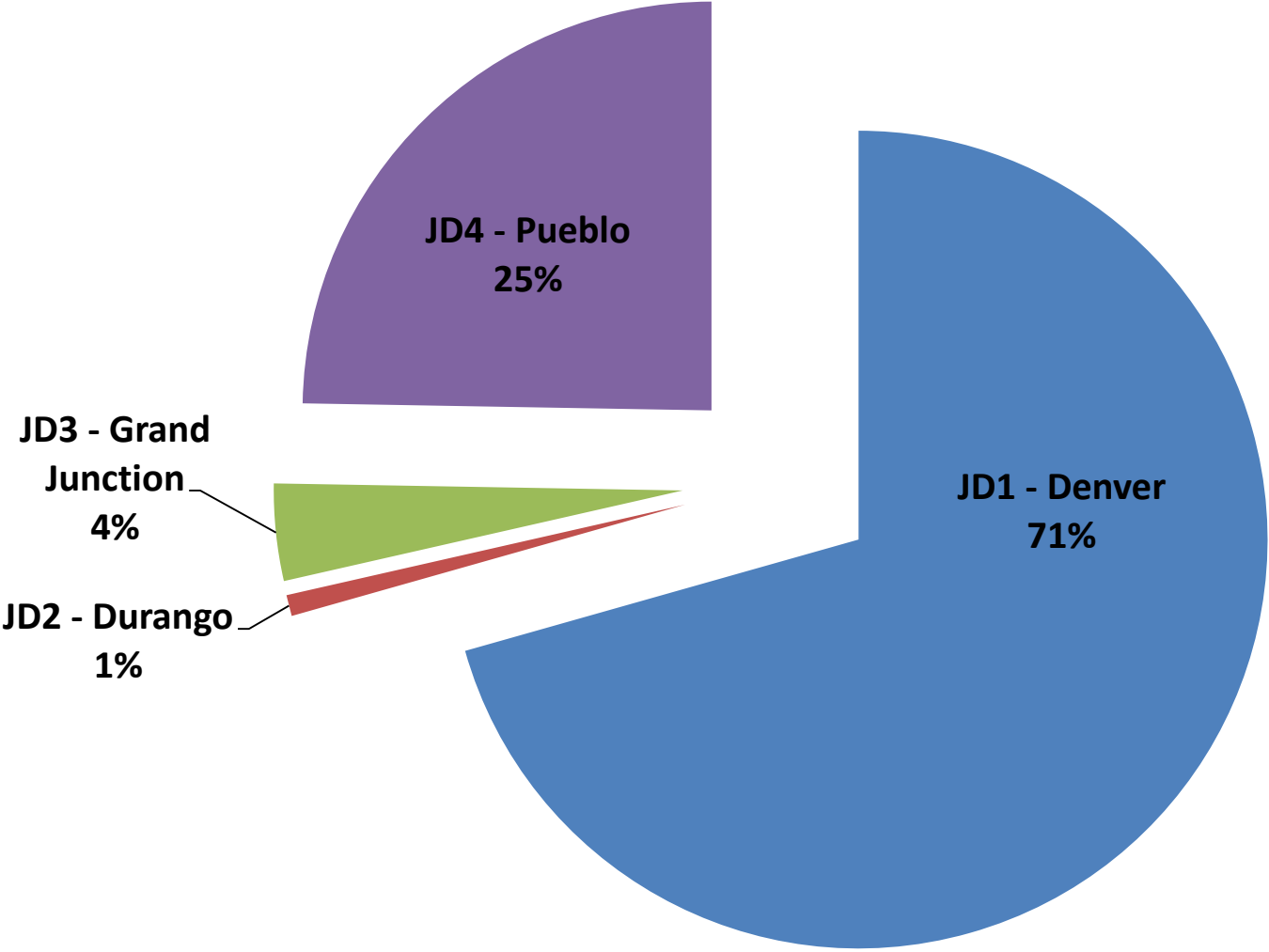


|                     | TOTAL*  | A      | B      | C      | D     | E     | F      | G      | H      | I      | J      | K   | L      |
|---------------------|---------|--------|--------|--------|-------|-------|--------|--------|--------|--------|--------|-----|--------|
| <b>CO</b>           | 3,144   | 224    | 32     | 693    | 31    | 29    | 181    | 517    | 242    | 165    | 686    | 3   | 341    |
| <b>10th Circuit</b> | 10,411  | 1,178  | 167    | 1,945  | 108   | 203   | 591    | 1,461  | 971    | 372    | 2,367  | 18  | 1,030  |
| <b>U.S.</b>         | 267,769 | 19,020 | 35,714 | 57,685 | 1,184 | 7,920 | 17,631 | 23,523 | 21,753 | 10,768 | 38,925 | 655 | 32,991 |

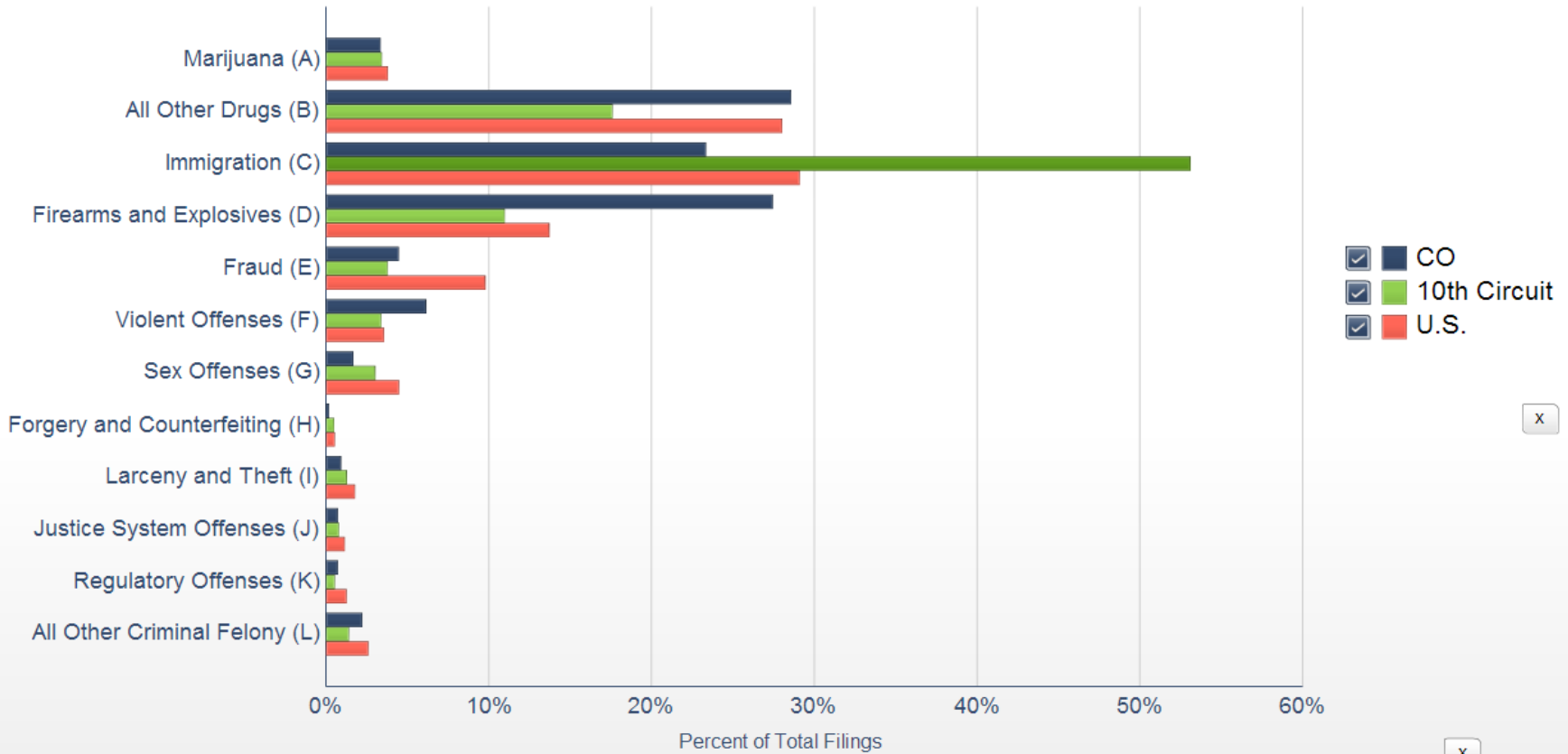
# Business-Related Filings, 1997–2017



# Civil Cases by Jury Division, 2017



# Criminal Case Snapshot, September 2017



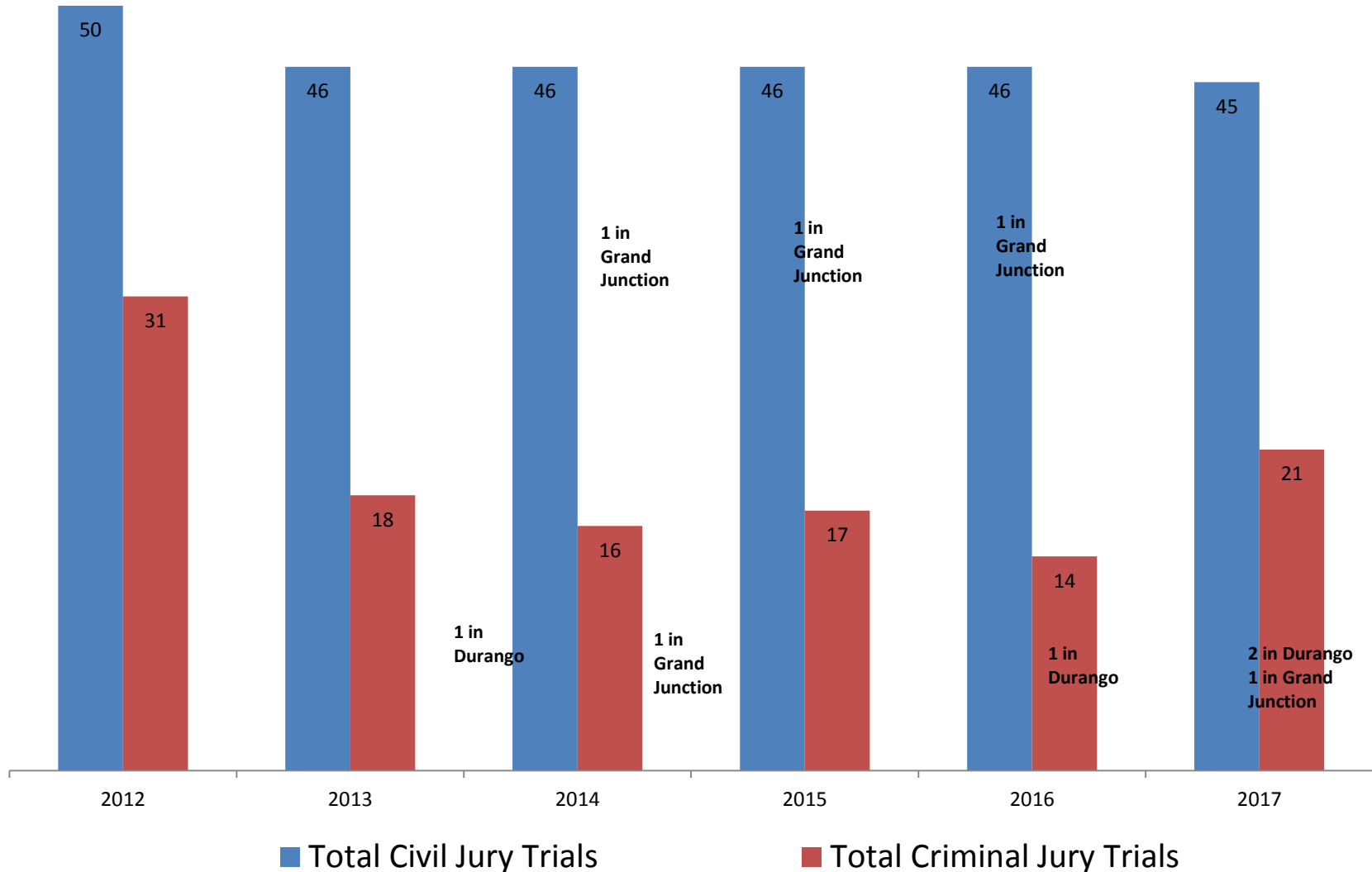
|                     | TOTAL* | A     | B      | C      | D     | E     | F     | G     | H   | I     | J   | K   | L     |
|---------------------|--------|-------|--------|--------|-------|-------|-------|-------|-----|-------|-----|-----|-------|
| <b>CO</b>           | 535    | 18    | 153    | 125    | 147   | 24    | 33    | 9     | 1   | 5     | 4   | 4   | 12    |
| <b>10th Circuit</b> | 6,210  | 214   | 1,094  | 3,299  | 683   | 236   | 211   | 189   | 32  | 80    | 50  | 34  | 88    |
| <b>U.S.</b>         | 70,002 | 2,670 | 19,624 | 20,382 | 9,619 | 6,864 | 2,504 | 3,149 | 390 | 1,258 | 818 | 893 | 1,831 |

NOTE: Criminal data in this profile count defendants rather than cases and therefore will not match previously published numbers.

\* Excludes criminal transfers.



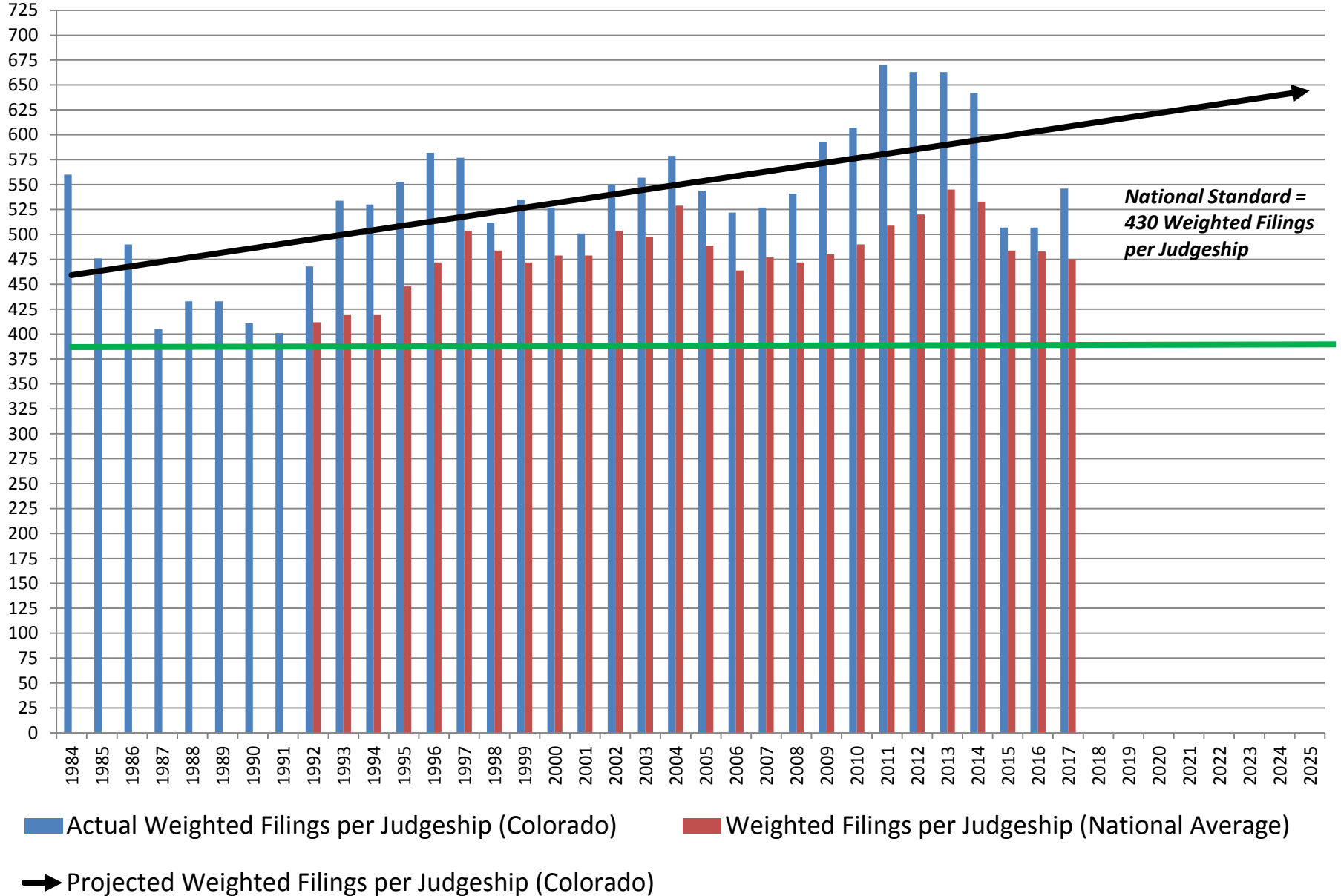
# Jury Trials, 2012–2017



# Weighted Caseload

- The Administrative Office of the U.S. Courts (AO) weights civil and criminal cases according to complexity, number of parties involved, and case type. Higher weighted values typically indicate that additional judge time is needed to achieve case disposition.
- This formula was recalculated in 2016.
- The AO has set a national workload standard (*i.e.*, baseline) at 430 weighted filings per judge. The national average is 475 weighted filings per judge.
- Colorado (546) has ranked from Nos. 8 to 20 nationally since 2007.

# Weighted Filings Per Judgeship, 1984–2025



# Where We Stand

## District (Art. III) Judges

- Chief Judge Krieger (2019) (Grand Junction)
- Judge Brimmer (2024)
- Judge Arguello (2022)
- Judge Martinez (2023)
- Judge Jackson (2021)
- Judge Moore (2023)
- Vacancy
- Senior Judge Matsch
- Senior Judge Kane
- Senior Judge Babcock
- Senior Judge Daniel
- Senior Judge Blackburn (Durango)

## Magistrate (Art. I) Judges

- Magistrate Judge Watanabe (Retiring July 2018)
- Magistrate Judge Shaffer
- Magistrate Judge Hegarty
- Magistrate Judge Mix
- Magistrate Judge Tafoya (Full-Time Colorado Springs)
- Magistrate Judge Wang
- Magistrate Judge Varholak
- Magistrate Judge West (Part-Time Durango, Retiring 2018)
- Magistrate Judge Gallagher (Part-Time Grand Junction)



2018 State of the Court

# Accomplishments

# Improved Access for Non-Denver Residents

- Full service criminal support (grand jury, preliminary matters, dispositions, and trials) in Durango and Grand Junction
  - Term of court in **Durango** – **2nd week of every other month** – Senior Judge Blackburn
  - Term of court in **Grand Junction** – **1st week of every other month** – Chief Judge Krieger
- 97 cases/defendants in Durango since September 2013
- 100 cases/defendants in Grand Junction since March 2015
- Expanded civil access for civil and bankruptcy cases
- Based on utilization survey, salary increases:
  - Grand Junction = Level 1
  - Durango = Level 3

# New Durango Courtroom

*In the La Plata County Courthouse*

April 10, 2017

Joint venture between GSA and La Plata County





# Colorado Springs Pilot Program

- Full-time magistrate judge in Pueblo Jury Division (JD4)
- Magistrate Judge Tafoya relocating to Colorado Springs facility on February 5, 2018
  - Will be assigned majority of new JD4 *civil* cases
- Will conduct entire Colorado Springs-based petty docket

# Pro Se Assistance

- Guide to Civil Lawsuits

<http://www.cod.uscourts.gov/RepresentingYourself/FilingCivilSuits-ProSe.aspx>

- Limited Representation

<http://www.cod.uscourts.gov/RepresentingYourself/LimitedRepresentation.aspx>



2018 State of the Court

# Looking Forward

# Pro Se Clinic Pilot Program

- Partnership between the Court and the Colorado Bar Association (CBA)
  - Clinic will be located in the Arraj courthouse
- Clinic will be staffed by an attorney providing consultations and brief advice about drafting pleadings, discovery, answers to discovery, motions, and oppositions to motions for non-prisoner pro se litigants in our Court
- Funded by Court's Attorney Admissions Fund augmented by a \$50 biennial assessment to all attorneys

# Ongoing Challenges

- Need more resources to help rehabilitate offenders and protect the public.
  - The Probation Office currently supervises 1,081 post-conviction offenders.
- Only one halfway house in Colorado to assist with offender reentry services, located in Denver with limited bed space
  - Substance abuse remains major obstacle to success on supervision, but treatment programs are limited
    - Limited space to house detainees in Jury Division 3

# More Judgeships Needed

- Judges to fill judicial vacancies
- Judges to carry the load for aging Senior Judges
  - Judgeships to
    - Address geographic and demographic demands
    - Address unique, heavy, and growing caseload

# More Judgeships Needed

- **Last judgeship was created 34 years ago in 1984.**
- Colorado's population has increased more than 80% in that time period.
- The Judicial Conference has requested Congress create additional judgeships in Colorado **for the past 28 years.**
  - Current caseload **requires 2 additional judgeships.**
- Bills are pending (but not moving) in both the House and Senate.





2018 State of the Court

# Questions?